

Proposed decision to be made by the Portfolio Holder for Transport and Planning on or after 12 April 2019

Objection to Proposed Traffic Signals with Toucan Crossing Facilities at A425 Banbury Road, Warwick

Recommendation

That the Portfolio Holder for Transport and Planning approves the installation of Toucan crossings as part of a traffic signal controlled junction at A425 Banbury Road, Warwick, as advertised pursuant to Section 23 of the Road Traffic Regulation Act 1984, conditional upon the necessary Highways Act 1980, Section 278 agreement being in place.

1.0 Key Issues

- 1.1 A planning application (W/16/2172) was submitted to Warwick District Council for the relocation of the King's High School to co-exist alongside Warwick School and Warwick Preparatory School. Planning permission was granted on 27 April 2017. The permitted scheme requires the Developer, Warwick Independent Schools Foundation, to install a traffic signal junction at a new access on Banbury Road and to close the existing access.
- 1.2 Public notice was given of the intention to install a traffic signal controlled junction with Toucan crossing facilities and objections have been received to the proposals for the junction.
- 1.3 Where a highway scheme is considered and approved as part of the planning process, the courts have made it clear that the highway / traffic authority is expected to co-operate in its implementation unless some exceptional or changed circumstances call for a different approach. There is a procedure for seeking to vary a planning permission so as to remove requirements imposed by conditions, and it is possible to seek a new planning permission entirely, but this would require a further planning application by the developer and approval from Warwick District Council (which would be guided but not bound by the advice of the highway / traffic authority).
- 1.4 The County Council intends to enter into a Section 278 agreement with the Developer to undertake the works. Under that agreement the cost of the traffic signal controlled junction and associated works will be fully funded by the Developer.
- 1.5 Traffic signal controlled junctions with pedestrian and Toucan crossing facilities contribute to an integrated pedestrian and cycling network and help to reduce conflict between traffic, pedestrians and cyclists, encouraging feelings of safety. These factors are important in encouraging walking and cycling within a community. The design of these facilities takes into account

the needs of people with physical and sensory disabilities to ensure equality of opportunity and access.

2.0 Proposed Scheme

- 2.1 The site of the proposed traffic signal controlled junction on A425 Banbury Road is indicated on the plan in the **Appendix**. Banbury Road is a busy route into Warwick town centre and the scheme is required to mitigate the highway impacts of the co-location of King's High School with Warwick School and Warwick Preparatory School.
- 2.2 The designs have been subjected to a combined Stage 1 and Stage 2 Road Safety Audit. No departures from standard have been identified.

3.0 Consultation on the Proposal

- 3.1 The Road Traffic Regulation Act 1984, Section 23, requires that before establishing, altering or removing a pedestrian crossing facility, the authority shall consult with the Chief Officer of Police and give public notice of the proposal. A public notice was erected on site in the vicinity of the proposed traffic signal junction, information was also published on Warwickshire County Council's website and in the Leamington Spa / Warwick Observer. Details were also sent to statutory consultees (including the Chief Officer of Police) and to the residents in the immediate vicinity of the site and who are directly affected.
- 3.2 Although Section 23 specifically relates to the installation of pedestrian / Toucan crossings, it is acknowledged that representations received from consultees often relate to the installation of traffic signals of which the crossings are an integral part and thus these are reported here.
- 3.3 During the consultation period between 01 February and 01 March 2019 no objections were received in respect of the Toucan crossing facilities, however representations were received from 43 members of the public regarding the traffic signals and wider matters in connection with their installation. The correspondence received is appended as background papers. The following paragraphs summarise the points made and gives responses.

3.4 Request for controlled crossing on Banbury Road

- 3.4.1 Thirty-three members of the public made representations requesting that the uncontrolled crossing on Banbury Road (north side of junction) should be a controlled crossing instead. Predominately the representations were received from residents of Bridge End which is to the west of Banbury Road.
- 3.4.2 The layout approved at planning does not include for a controlled crossing of Banbury Road. The existing refuge island to the north of the new junction will remain, giving those pedestrians coming from the southern end of the Bridge End estate two possible locations to cross. There are pedestrian / cycling

facilities on the east side of Banbury Road and the new junction gives access to the drop-off point within the Warwick School site.

- 3.4.3 Whilst a controlled crossing is not part of the approved plan, the Developer has agreed to install the necessary ductwork to allow the facility to be implemented in the future. It should be noted, however, that traffic modelling will be required to assess the impact of changing the traffic signal staging to include a pedestrian crossing phase given the possibility of queueing traffic on Banbury Road affecting the operation of the Gallows Hill junction.
- 3.4.4 It was noted by 12 of these members of the public and by a further seven respondents that Bridge End is used by some parents for dropping off / picking up school children rather than using the facilities within the school site. It is possible that providing a controlled crossing could encourage rather than deter this behaviour.
- 3.4.5 Five members of the public requested a controlled crossing at the Myton Road / Banbury Road junction. The future signalisation of this junction may come forward as planning gain from development elsewhere in Warwick and this is likely to include pedestrian crossing facilities. However, there are no timescales available at the current time.

3.5 Other representations

- 3.5.1 Five members of the public raised concerns about having two, and in the future three, traffic signal installations in close proximity. The new junction has been designed so that the northbound Banbury Road will be free-flowing and that traffic on the southbound side will only be stopped if there are vehicles waiting to turn right into the school or to turn left out of the school. The traffic signals will use information about traffic flows from the vehicle detectors to optimise the length of time for which traffic has a green signal. This will minimise the overall delays to traffic at this junction. The Gallows Hill junction operates in the same way.
- 3.5.2 Eleven members of the public mentioned concerns about the speed of traffic. The intention to extend the 30 mph speed limit to a point approximately 75 metres south of the junction is subject to a separate advertisement and consultation process. There is no requirement to extend the existing 20 mph speed limit along Banbury Road as part of this scheme.

4.0 Financial Implications

- 4.1 The County Council intends to enter into a Section 278 agreement with the Developer to undertake the works. Under that agreement the costs will be fully funded by the Developer. Approval to add this scheme to the capital programme was given by the Deputy Leader (Finance and Property) at his decision making meeting on 15 March 2019. However, this was a decision concerning financial and operational management and does not affect the responsibility of the Portfolio Holder for Transport and Planning to consider the merits of the proposed scheme.

5.0 Conclusion

- 5.1 The requirement for the installation of the traffic signal controlled junction with Toucan crossing facilities was identified during the planning process. The costs associated with the introduction of the junction improvement and all related features will be funded by the Developer.
- 5.2 The Developer has agreed to the inclusion of the ductwork which would be required if controlled crossing facilities across Banbury Road were to be installed in the future.
- 5.3 It is recommended that the Portfolio Holder for Transport and Planning approves the installation of the traffic signal controlled junction with Toucan crossing facilities at A425 Banbury Road / Warwick School site access, Warwick, as advertised.

Background papers

Letters of objections to the proposals

Appendix – A425 Banbury Road / Warwick School site access scheme plan

	Name	Contact Information
Report Authors	Shirley Reynolds	shirleyreynolds@warwickshire.gov.uk 01926 412110
Assistant Director (Environment Services)	Scott Tompkins	scotttompkins@warwickshire.gov.uk Tel: 01926 412422
Strategic Director (Communities)	Mark Ryder	markryder@warwickshire.gov.uk Tel: 01926 412811
Portfolio Holder for Transport and Planning	Jeff Clarke	cllrclarke@warwickshire.gov.uk

This report was circulated to the following members prior to publication:

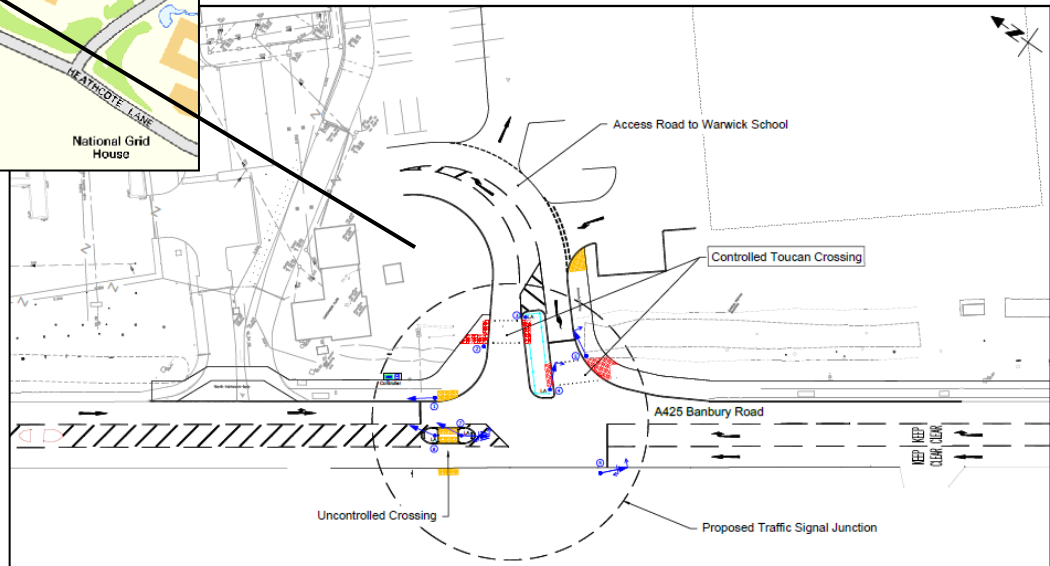
Local Member:

Cllr Parminder Singh Birdi – Warwick South

Other Members:

Cllr Chattaway; Cllr Chilvers; Cllr Cockburn; Cllr Fradgley; Cllr Phillips;
Cllr Roodhouse; Cllr Shilton

Appendix



S278 scheme:
A425 Banbury Road, Warwick